

HOTEL INDIGO®

LONDON - 1 LEICESTER
SQUARE



A Boutique Hotel, Part of a Global Network

Welcome to Hotel Indigo - 1 Leicester Square



Mirroring the 1920s glamour of its theatrical surroundings, **Hotel Indigo® London – 1 Leicester Square** draws you in to an art deco, glass-and-marble haven.

Our bespoke rooms have walls adorned by framed scripts, gently spot lit with stage lights hanging from rigging. Let life stand still in our spa bathrooms and you'll sleep soundly behind plush velvet, stage-inspired curtains.



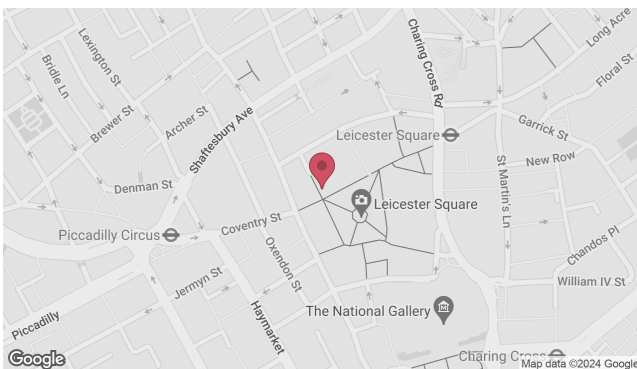
Delight on a delicious breakfast buffet served on the 9th floor of the hotel at the **LSQ Rooftop**. Served every morning from 7am to 11am. Start your day with a fulfilling meal with a side of one of London's best panoramic views.

The hotel offers the following services:

- Rooftop Bar & Restaurant
- Accessible Rooms
- Luggage Storage
- Complimentary Early Check In (subject to availability)

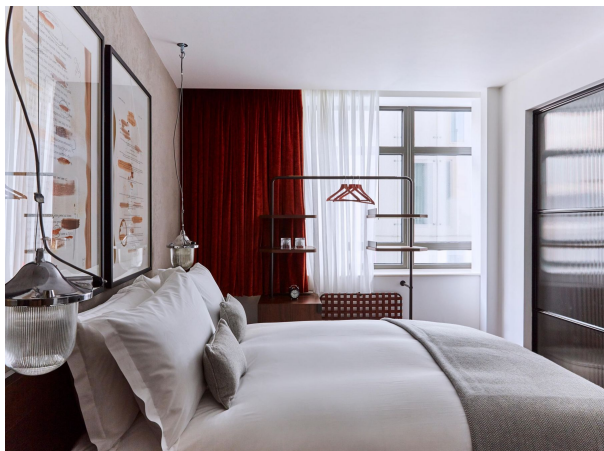
An Undisputed Address in The Heart of Central London

Step out into Leicester Square from our boutique hotel and you're in the domain of red-carpet premieres at world-famous cinemas. Chose a big-name show in a glittering West End theatre or dine in one of London's best restaurants.



Unique Rooms at Hotel Indigo 1 Leicester Square

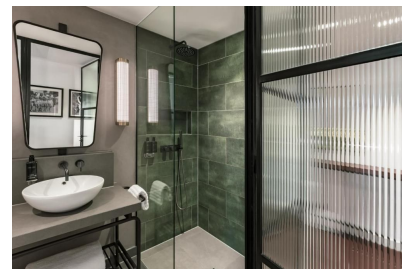
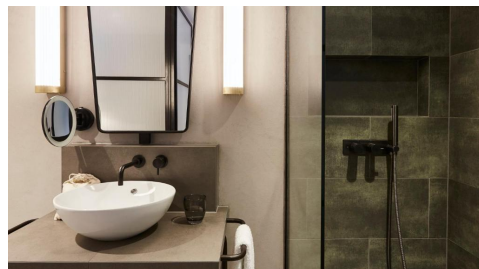
Standard Double Room



- 15 to 19 sqm (161 sqft to 205 sqft)
- 1 queen or king bed
- Rainfall Shower
- 65-inch Smart TV or Hospitality TV
- Air Conditioning
- Theater Room Available (Windowless)



En-suite Bathrooms



Premium Double Room



- 19 to 22 sqm (205 sqft to 237 sqft)
- Ensuite Bathroom & Rainfall Shower
- Espresso Coffee Machine
- Smart Flat Screen TV
- Air Conditioning & Soundproofing



Premium Rooms with a View



Leicester Square or City View

- 17 to 30 sqm (183 sqft to 323 sqft)
- Walk-in Shower, Espresso Coffee Machine
- Hospitality TV, with additional an extra 90 x 180 cm (about 5.91 ft) option on request
- Premium Rooms with a Balcony are also available.

